

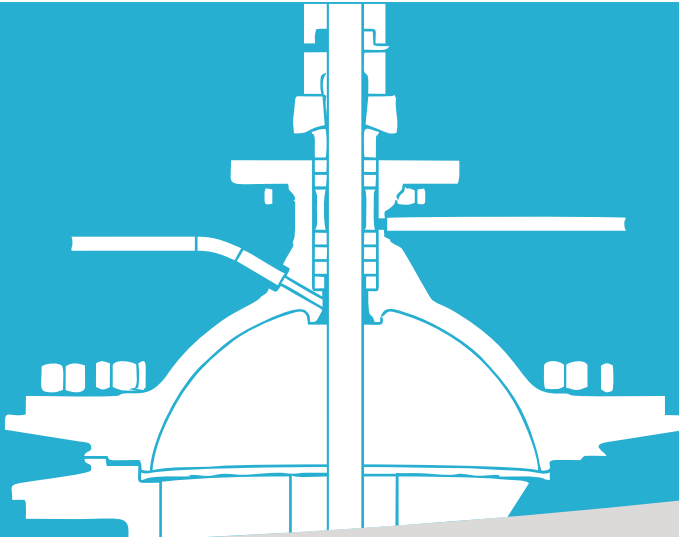


ENGINEERED VALVES

JASPAR Valves and Maintenance
S.A.

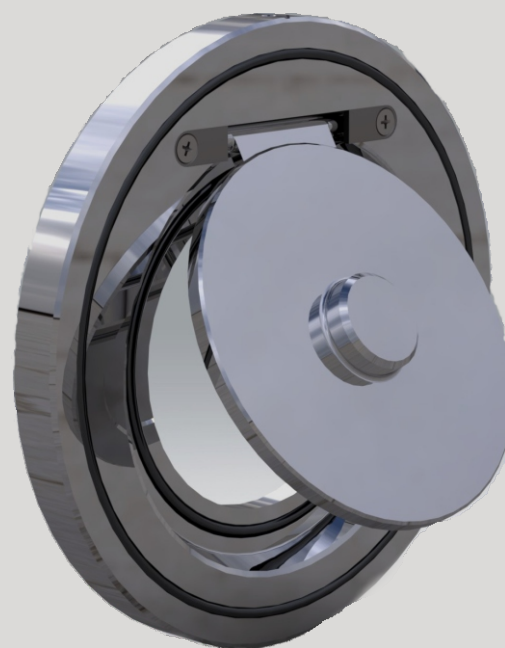
Rue de la Cale Sèche, 30
B-4684 OUPEYE

Tél. : +32-4/248 07 97
info@jaspar.be



Technical data sheet

Wafer swing Check Valve type HZW Hight Tightness



Design – construction
ANSI B16.34 – ASME III – RCC-M

Valve classification
ANSI 150 - 300 lbs

End to End connection
Flange

Bore desing
Reduced bore DN 50 – 300 mm

Seating
EPDM / NBR / VITON

Nuclear Application Specificities :

Qualified at 45°c for 16 years
Qualified for 126 Mrad (CEA)
LOCA and Post-LOCA qualified (CEA)
Pressure 2.8 bar → Leak <0.5 Ncc/min