



JASPAR Valves and Maintenance S.A.

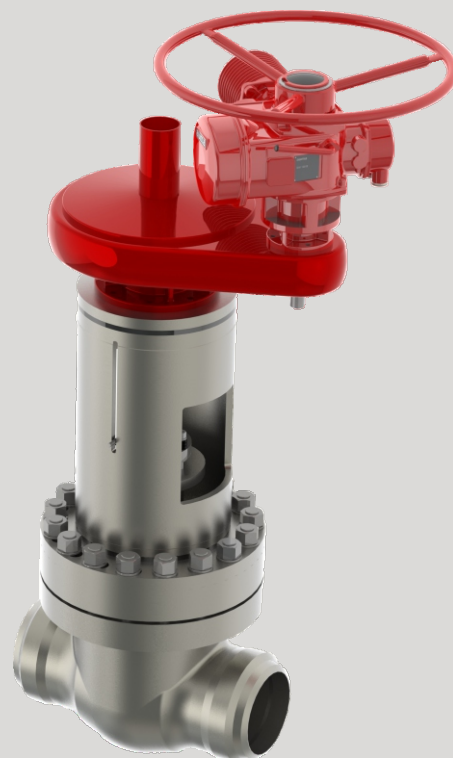
Rue de la Cale Sèche, 30 - B-4684
OUPEYE

Tél. : +32-4/248 07 97
info@jaspar.be



Technical data sheet

Parallel Slide Gate Valve Type A (casting steel)



Design – construction
ANSI B16.34 – ASME III – RCC-M

Valve classification
ANSI 150 - 600 lbs

End to End connection
Flange, Socket or Butt welding

Body / Bonnet joint
Bolted bonnet

Bore desing
Full bore DN 200 – 600 mm

Seating
Stellited grade 6

Motorisation
Handwheel, pneumatic or electrical actuator

Standard material
Body in cast carbon steel or cast stainless steel.